

# Playground Proposal

Geo Series

16th December 2020



ويفز للتجارة والمقاولات ك.م.م.  
WAVES TRADING & CONTRACTING W.L.L.





# Hello!

*I am Stephanie*

Your playground specialist

You can find me at:

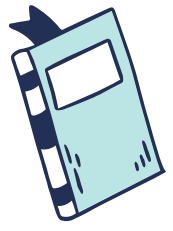
[stephanie.lwk@parkgames.com.my](mailto:stephanie.lwk@parkgames.com.my)

(60) 17 276 1001

Let's have a look



**B**



**3**



**2**



Let's have a look



**A**



$2+2$



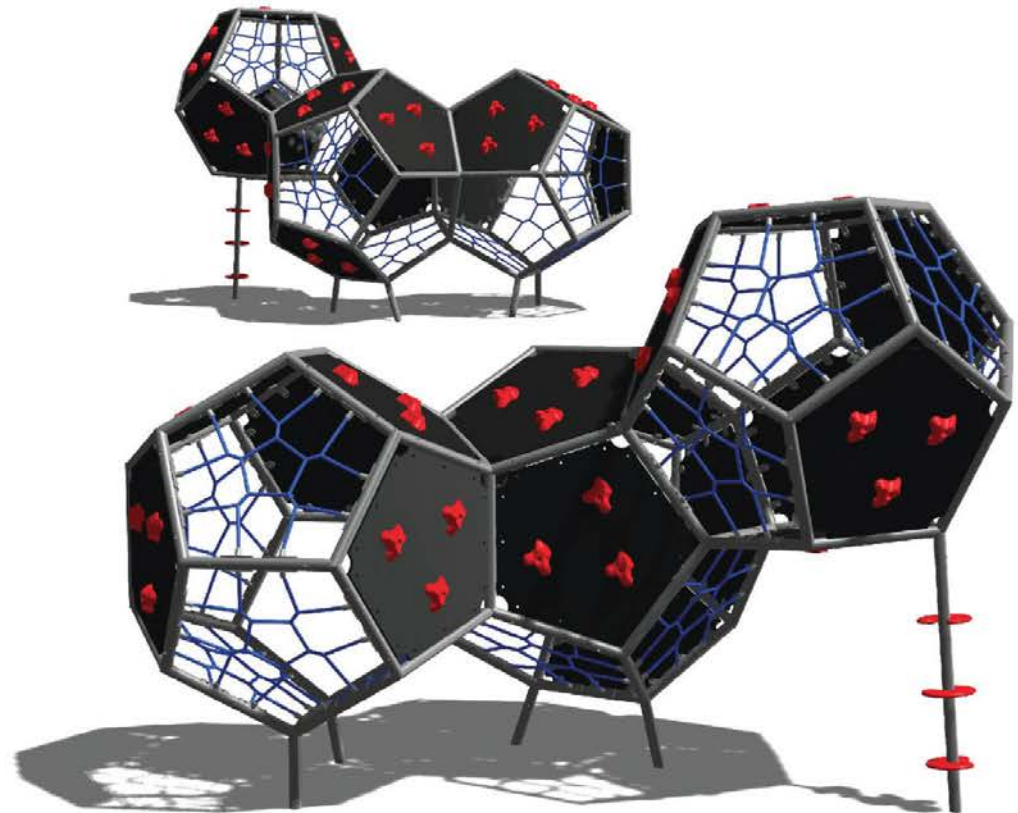
**1**



**GOOD DESIGN AWARD for year 2010**

Product Name GEO SPHERE  
 Model No GEO-003-A01-00  
 Brand Name VTX ROPE & CLIMBING STRUCTURES  
 Company Name PARK GAMES EQUIPMENT (M) SDN BHD  
 Category LEISURE, HOBBIES AND SPORTS PRODUCTS

Bringing the marvels of physics to kids above the age of 6, Geosphere is an easy to install child's play equipment. With various play styles and multi-level difficulty challenges, the Geosphere comes in various configurations and size options to aid in the cognitive, motor, physical and interaction skills of children. It also allows children to climb, build their strength, physical muscle and confidence, while playing the Geosphere.



PARKGAMES.COM.MY



ويفز للتجارة والمقاولات ك.م.م.  
 WAVES TRADING & CONTRACTING W.L.L.

\*All product pictures and images are for presentation purposes only.

\*ALL PRODUCTS PICTURE AND IMAGES FOR PRESENTATION PURPOSES ONLY \*



# PARK GAMES EQUIPMENT

## GEO-002-A05-01-EXTENDED

### PLAY EQUIPMENTS

1. Crawl Tube w Spy Holes 2'
2. Wave Slide 3'
3. Access Ladder wt Handle Panel 2'
4. Tree Climber 3'
5. Vertical Wall Climber Deck 3'
6. Tic-Tac-Toe
7. Shapes Panel
8. Hibiscus Cap
9. Klick Klack Panel
10. Bean Sprout Panel
11. GS Hook Tube Slide
12. Geo Sphere

### PLAY EQUIPMENTS

6.37 x 6.4 x 3.9m (h)

2m around

AGE+ 4 to 12

24



TOP VIEW

Scale 1 : 100  
Paper A4



ويفز للتجارة والمقاولات ك.م.م.  
WAVES TRADING & CONTRACTING W.L.L.

305 BLK B, PHILEO DAMANSARA 2, 15 JLN 16/11, OFF JLN DAMANSARA, 46350 PETALING JAYA, SELANGOR DARUL EHSAN, MALAYSIA

\*ALL PRODUCTS PICTURES AND IMAGES ARE FOR PRESENTATION PURPOSES ONLY

\*ALL PRODUCTS PICTURE AND IMAGES FOR PRESENTATION PURPOSES ONLY \*

# PARK GAMES EQUIPMENT



PROPOSED TO

JRD

AREA

PLAYGROUND

DO NUMBER

DO0151018-06

DATE

06/07/220

PREPARED BY

MIRUL

PROPOSED BY

KAH FAI



## PLAY EQUIPMENTS

- |                                   |    |
|-----------------------------------|----|
| 1. VTX-010-A11-00                 | x1 |
| 2. 2 SEATER COMPACT CURVE SEE SAW | x2 |
| 3. SPRING RIDER (TYRE RACING)     | x1 |
| 4. SPRING RIDER (SHURIKEN)        | x1 |
| 5. PLAYABLE MOUND WITH PILLAR     | x1 |

## FLOORING

- |              |  |
|--------------|--|
| 1. EPDM AREA | 278sqm   |
| COLOUR       | DARK GREEN, BERMUDA GREEN, EARTH YELLOW, BEIGE & BROWN |



ويفز للتجارة والمقاولات ك.م.م.  
WAVES TRADING & CONTRACTING W.L.L.

\*ALL PRODUCTS PICTURE AND IMAGES FOR PRESENTATION PURPOSES ONLY \*



www.parkgames.com.my

# PARK GAMES EQUIPMENT



PROPOSED TO

JRD

AREA

PLAYGROUND

DO NUMBER

DO0151018-06

DATE

06/07/2020

PREPARED BY

MIRUL

PROPOSED BY

KAH FAI



## PLAY EQUIPMENTS

- |    |                                |    |
|----|--------------------------------|----|
| 1. | VTX-010-A11-00                 | x1 |
| 2. | 2 SEATER COMPACT CURVE SEE SAW | x2 |
| 3. | SPRING RIDER (TYRE RACING)     | x1 |
| 4. | SPRING RIDER (SHURIKEN)        | x1 |
| 5. | PLAYABLE MOUND WITH PILLAR     | x1 |

## FLOORING

- |    |           |        |
|----|-----------|--------|
| 1. | EPDM AREA | 278sqm |
|----|-----------|--------|



DARK GREEN, BERMUDA  
GREEN, EARTH YELLOW,  
BEIGE & BROWN



ويفز للتجارة والمقاولات ك.م.م.  
WAVES TRADING & CONTRACTING W.L.L.

\*ALL PRODUCTS PICTURE AND IMAGES FOR PRESENTATION PURPOSES ONLY \*

# PARK GAMES EQUIPMENT



PROPOSED TO

JRD

AREA

PLAYGROUND

DO NUMBER

DO0151018-06

DATE

06/07/2020

PREPARED BY

MIRUL

PROPOSED BY

KAH FAI

## PLAY EQUIPMENTS

- |    |                                |    |
|----|--------------------------------|----|
| 1. | VTX-010-A11-00                 | x1 |
| 2. | 2 SEATER COMPACT CURVE SEE SAW | x2 |
| 3. | SPRING RIDER (TYRE RACING)     | x1 |
| 4. | SPRING RIDER (SHURIKEN)        | x1 |
| 5. | PLAYABLE MOUND WITH PILLAR     | x1 |

## FLOORING

- |    |           |  |
|----|-----------|--|
| 1. | EPDM AREA | 278sqm   |
|    | COLOUR    | DARK GREEN, BERMUDA GREEN, EARTH YELLOW, BEIGE & BROWN |



305 BLK B, PHILEO DAMANSARA 2, 15 JLN 16/11, OFF JLN DAMANSARA, 46350 PETALING JAYA, SELANGOR DARUL EHSAN, MALAYSIA

# PARK GAMES EQUIPMENT



PROPOSED TO  
JRD  
AREA  
PLAYGROUND  
DO NUMBER  
DO0151018-06  
DATE  
06/07/2020  
PREPARED BY  
MIRUL  
PROPOSED BY  
KAH FAI



## Safety Flooring

**EPDM Area Size:**

278 sqm

**Colour:**

Forest Green, Olive Green, Earth Yellow, Beige, Brown



ويفز للتجارة والمقاولات ك.م.م.  
WAVES TRADING & CONTRACTING W.L.L.

\*ALL PRODUCTS PICTURE AND IMAGES FOR PRESENTATION PURPOSES ONLY \*

WWW.PARKGAMES.COM.MY + PARKGAMESPLAYGROUNDS @PGEPLAYGROUNDS TEL: +6(03) 7491 0278 FAX: +6(03) 7491 1801



**PARK GAMES  
EQUIPMENT**

**GEO-002-A12-00-EXTENDED**

**PLAY EQUIPMENTS**

5.90 x 5.60 x 2.78m (h)

2m around

AGE+ 4 to 12

24



ISOMETRIC VIEW



TOP VIEW  
Scale 1: 100  
Paper A4



ويفز للتجارة والمقاولات ك.م.م.  
**WAVES TRADING & CONTRACTING W.L.L.**

305 BLK B, PHILEO DAMANSARA 2, 15 JLN 16/11, OFF JLN DAMANSARA, 46350 PETALING JAYA, SELANGOR DARUL EHSAN, MALAYSIA

WWW.PARKGAMES.COM.MY f PARKGAMESPLAYGROUNDS @PGEPLAYGROUNDS TEL: +6(03) 7491 0278 FAX: +6(03) 7491 1801



ALL PICTURES AND IMAGES ARE FOR PRESENTATION PURPOSES ONLY

\*ALL PRODUCTS PICTURE AND IMAGES FOR PRESENTATION PURPOSES ONLY \*

**GEO-002-A12-00-  
Extended**

**Equipment Size:**

5.9 x 5.6 x 2.78m (h)

**Maximum Capacity:**

24

**Age Group:**

4+





PARK GAMES  
EQUIPMENT

GEO-002-A09`-00-EXTENDED

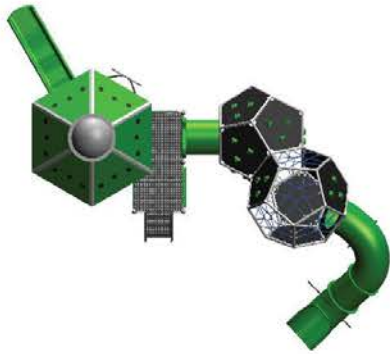
PLAY EQUIPMENTS

7.11m x 6.21m x 4.0m (h)

2m around

AGE+ 4 to 12

24



TOP VIEW

Scale 1 : 100



ويفز للتجارة والمقاولات ك. م. م.  
WAVES TRADING & CONTRACTING W.L.L.

305 BLK B, PHILEO DAMANSARA 2, 15 JLN 16/11, OFF. JLN DAMANSARA, 46350 PETALING JAYA, SELANGOR DARUL EHSAN, MALAYSIA

WWW.PARKGAMES.COM.MY f PARKGAMESPLAYGROUNDS @PGEPLAYGROUNDS TEL: +6(03) 7491 0278 FAX: +6(03) 7491 1801

ALL PRODUCTS PICTURE AND IMAGES ARE FOR PRESENTATION PURPOSES ONLY

\*ALL PRODUCTS PICTURE AND IMAGES FOR PRESENTATION PURPOSES ONLY \*

# PARK GAMES EQUIPMENT



PROPOSED TO  
PRAXIS DESIGN  
AREA  
PLAYGROUND  
DO NUMBER  
D00161120  
DATE  
23/11/2020  
PREPARED BY  
MIRA  
PROPOSED BY  
EDMUND

It is a good one for the older kids with the challenge of making their way to the top and then even daringly to cross between the two!



**GEO-002-A13-00  
Extended**

**Equipment Size:**  
9.79 x 5.16 x 3.01m(h)  
**Maximum Capacity:**  
20  
**Age Group:**  
5+



ويفز للتجارة والمقاولات ك.م.م.  
WAVES TRADING & CONTRACTING W.L.L.

305 BLK B, PHILEO DAMANSARA 2, 15 JLN 16/11, OFF JLN DAMANSARA, 46350 PETALING JAYA, SELANGOR DARUL EHSAN, MALAYSIA

WWW.PARKGAMES.COM.MY f PARKGAMESPLAYGROUNDS @PGEPLAYGROUNDS TEL: +6(03) 7491 0278 FAX: +6(03) 7491 1801

\*ALL PICTURES AND IMAGES ARE FOR PRESENTATION PURPOSES ONLY

\*ALL PRODUCTS PICTURE AND IMAGES FOR PRESENTATION PURPOSES ONLY \*



# PARK GAMES EQUIPMENT

## GEO-002-A13-00-EXTENDED

### PLAY EQUIPMENTS

9.79 x 5.16 x 3.01m (h)

2m around

AGE+ 5 to 12

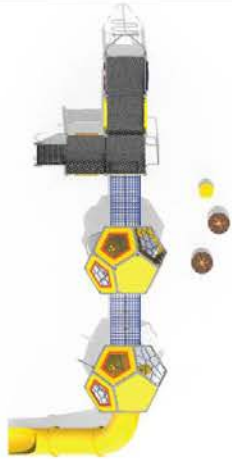
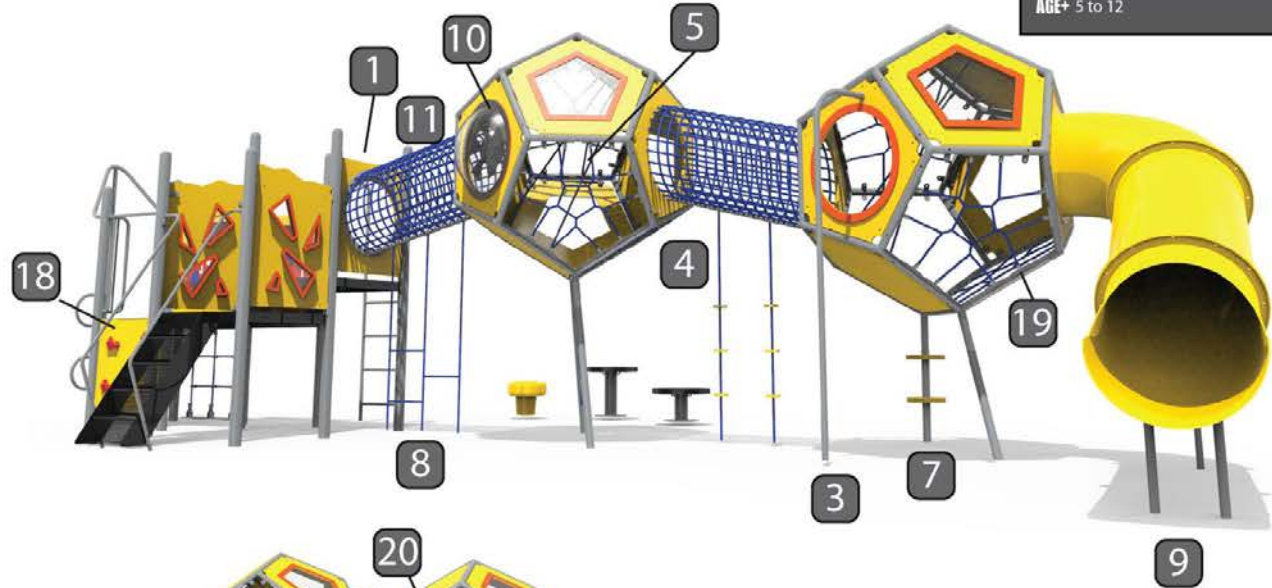
20

### PLAY EQUIPMENTS

- |                                |    |
|--------------------------------|----|
| 1. Access Ladder 3'            | x1 |
| 2. Kampung Window Panel-Type 1 | x1 |
| 3. See Through Panel Deco A    | x2 |
|                                | x1 |

### Play Component

1. CRAWL PANEL
2. Flower Pedestal - 12"
3. GEO-CLIMBING POLE
4. GEO-HDPE ROPE STEP
5. GEO-ROPE MAZE
6. GEO-SPIDER NET
7. GEO-STEPPING STEP HDPE
8. GEO-ZIG ZAG CLIMBER
9. Hook Tube Slide 4' (type 2)
10. Kaleidoscope Panel
11. ROPE CRAWL UP 1FT
12. Rung Ladder (18") 4'
13. Shapes Combo Panel
14. Shapes Panel
15. Stepping Lily Pad
16. Tree Climber 3'
17. Vertical Rope Climber (3')
18. Vertical Wall Climber Deck (3')
19. Lower Rope Climber
20. Upper Rope Climber



TOP VIEW  
Scale 1 : 150  
Paper A4

ويفز للتجارة والمقاولات ك. م. م .  
WAVES TRADING & CONTRACTING W.L.L.

305 BLK B, PHILEO DAMANSARA 2, 15 JLN 16/11, OFF JLN DAMANSARA, 46350 PETALING JAYA, SELANGOR DARUL EHSAN, MALAYSIA

WWW.PARKGAMES.COM.MY f PARKGAMESPLAYGROUNDS @PGEPLAYGROUNDS TEL: +(03) 7491 0278 FAX: +(03) 7491 1801

\*ALL PRODUCTS PICTURE AND IMAGES FOR PRESENTATION PURPOSES ONLY \*

# PARK GAMES EQUIPMENT



PROPOSED TO  
PRAXIS DESIGN  
AREA  
PLAYGROUND  
DO NUMBER  
DO0161120-01  
DATE  
30/11/2020  
PREPARED BY  
MIRA  
PROPOSED BY  
EDMUND

It is a good one for the older kids with  
the challenge of making their way  
to the top and then even  
daringly to cross between the two!



## GEO-002-A13-00 Extended

**Equipment Size:**

5.95 x 6.51 x 2.77m(h)

**Maximum Capacity:**

20

**Age Group:**

5+



ويفز للتجارة والمقاولات ك.م.م.  
WAVES TRADING & CONTRACTING W.L.L.

305 BLK B, PHILEO DAMANSARA 2, 15 JLN 16/11, OFF JLN DAMANSARA, 46350 PETALING JAYA, SELANGOR DARUL EHSAN, MALAYSIA

WWW.PARKGAMES.COM.MY f PARKGAMESPLAYGROUNDS @PGEPLAYGROUNDS TEL: +6(03) 7491 0278 FAX: +6(03) 7491 1801



\*ALL PRODUCTS PICTURE AND IMAGES ARE FOR PRESENTATION PURPOSES ONLY

\*ALL PRODUCTS PICTURE AND IMAGES FOR PRESENTATION PURPOSES ONLY \*



# PARK GAMES EQUIPMENT

## GEO-002-A13-00-EXTENDED

### PLAY EQUIPMENTS

5.95 x 6.51 x 2.77m (h)

2m around

AGE+ 5 to 12

20

### PLAY EQUIPMENTS

1. Access Ladder wt Handle Panel 2' x1
2. Rise Kick Plate 1' x1

### Play Component

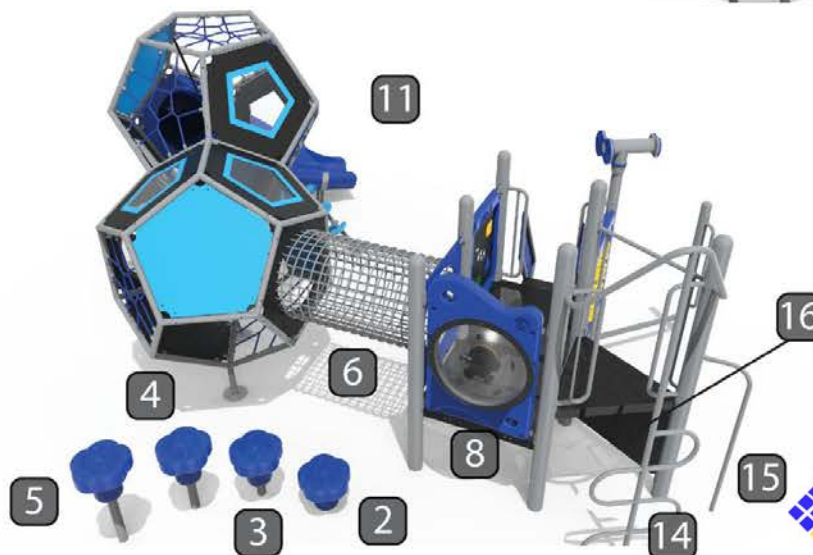
- |                                     |    |
|-------------------------------------|----|
| 1. Binocula (KPY)                   | x1 |
| 2. Flower Pedestal - 12"            | x1 |
| 3. Flower Pedestal - 18"            | x1 |
| 4. Flower Pedestal - 24"            | x1 |
| 5. Flower Pedestal - 30"            | x1 |
| 6. GEO with 2ft Straight Crawl Tube | x1 |
| 7. Kaleidoscope Panel               | x1 |
| 8. Klick Klack Panel                | x1 |
| 9. Mini Walk                        | x1 |
| 10. ROPE CLIMBER WT HDPE            | x1 |
| 11. Crawl panel                     | x1 |
| 12. Shapes Panel                    | x1 |
| 13. Tic-Tac-Toe                     | x1 |
| 14. Tree Climber 3'                 | x1 |
| 15. Upright Support                 | x1 |
| 16. Vertical Wall Climber Deck (3') | x1 |
| 17. Lower Climber                   | x1 |
| 18. Side Climber                    | x1 |
| 19. Upper Climber                   | x1 |
| 20. Tube Slide                      | x1 |



TOP VIEW

Scale 1 : 150

Paper A4



ويفز للتجارة والمقاولات ك.م.م.  
WAVES TRADING & CONTRACTING W.L.L.

305 BLK B, PHILEO DAMANSARA 2, 15 JLN 16/11, OFF JLN DAMANSARA, 46350 PETALING JAYA, SELANGOR DARUL EHSAN, MALAYSIA

WWW.PARKGAMES.COM.MY f PARKGAMESPLAYGROUNDS @PGEPLAYGROUNDS TEL: +6(03) 7491 0278 FAX: +6(03) 7491 1801

\*ALL PRODUCTS PICTURE AND IMAGES FOR PRESENTATION PURPOSES ONLY \*

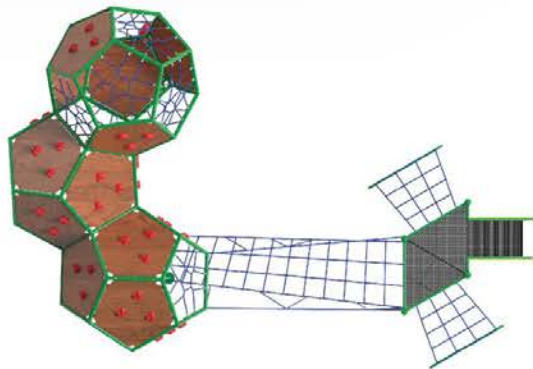
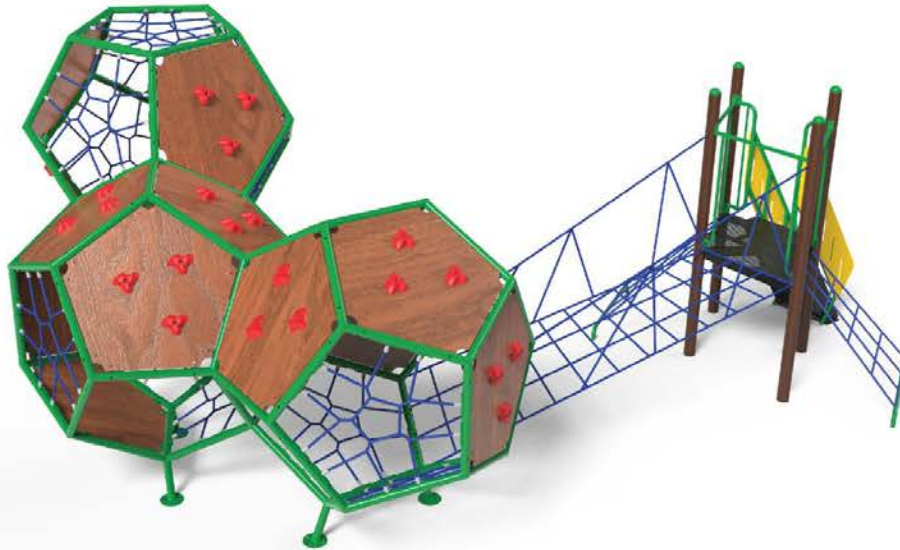


**PARK GAMES  
EQUIPMENT**

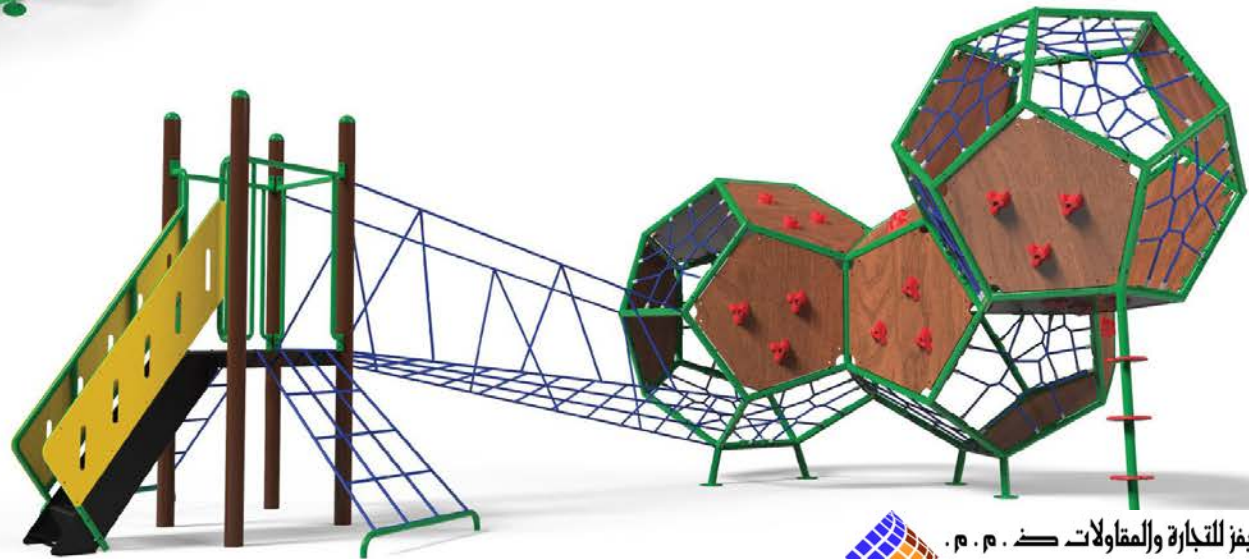
**GEO-003-A08-00**

**PLAY EQUIPMENTS**

5.68 x 5.99 x 2.78m (h)	2m around
<b>AGE+</b> 4 to 12	15



TOP VIEW  
Not to scale



**ويفز للتجارة والمقاولات ك.م.م .  
WAVES TRADING & CONTRACTING W.L.L.**

305 BLK B, PHILEO DAMANSARA 2, 15 JLN 16/11, OFF JLN DAMANSARA, 46350 PETALING JAYA, SELANGOR DARUL EHSAN, MALAYSIA

WWW.PARKGAMES.COM.MY f PARKGAMESPLAYGROUNDS @PGEPLAYGROUNDS TEL: +6(03) 7491 0278 FAX: +6(03) 7491 1801

ALL PICTURES AND IMAGES ARE FOR PRESENTATION PURPOSES ONLY

\*ALL PRODUCTS PICTURE AND IMAGES FOR PRESENTATION PURPOSES ONLY \*



PARK GAMES  
EQUIPMENT

# Xe Geo Bench-001 (Black & Green)

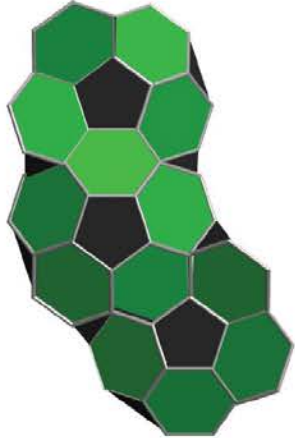
PLAY EQUIPMENTS

1.78 x 2.69 x 0.60m (h)

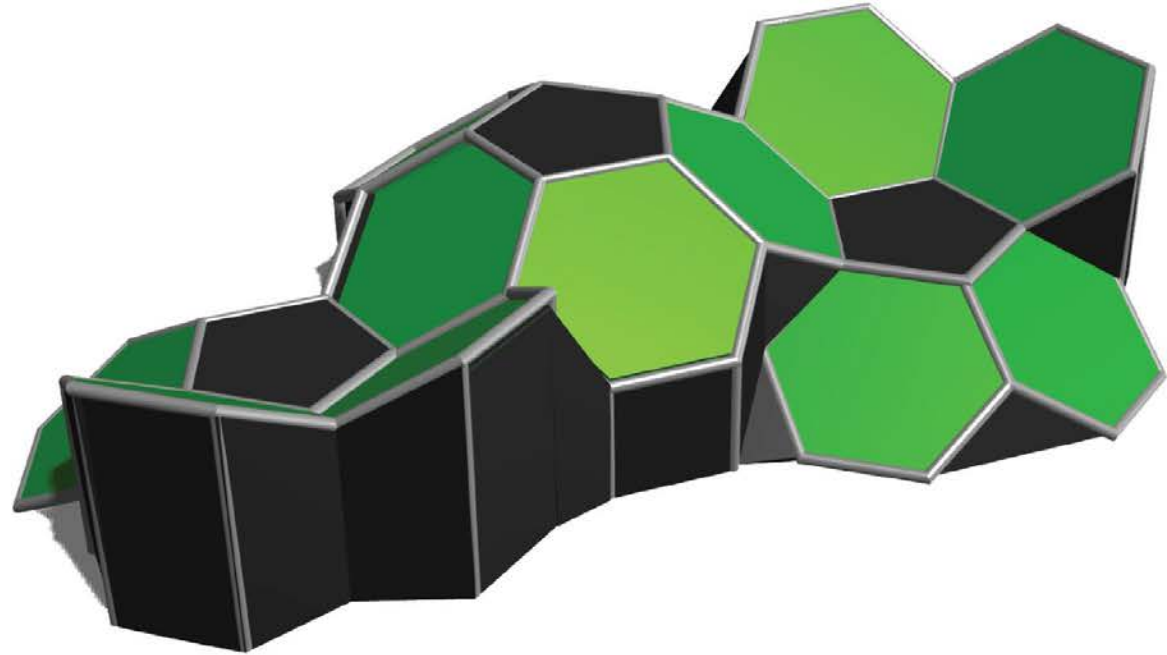
2m around

AGE+ 4 to 12

8



TOP VIEW  
Scale 1 : 100



SIDE VIEW



ويفز للتجارة والمقاولات ك.م.م.  
WAVES TRADING & CONTRACTING W.L.L.

305 BLK B, PHILEO DAMANSARA 2, 15 JLN 16/11, OFF JLN DAMANSARA, 46350 PETALING JAYA, SELANGOR DARUL EHSAN, MALAYSIA

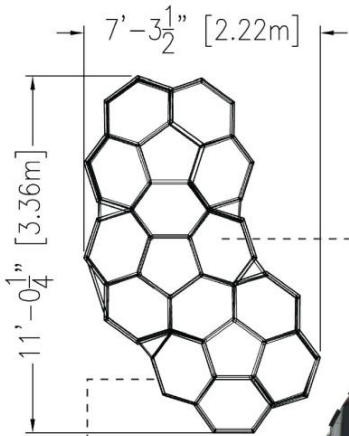
WWW.PARKGAMES.COM.MY f PARKGAMESPLAYGROUNDS @PGEPLAYGROUNDS TEL: +6(03) 7491 0278 FAX: +6(03) 7491 1801



ALL PICTURES AND IMAGES ARE FOR PRESENTATION PURPOSES ONLY

\*ALL PRODUCTS PICTURE AND IMAGES FOR PRESENTATION PURPOSES ONLY \*

# XE GEO BENCH - 001

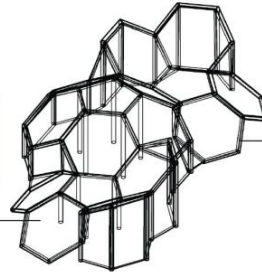


**PLAN**

There is no void or opening around the equipment

High Density Polyethylene (HDPE) – 6mm/10mm  
 Shall be of 6mm or 10mm nominal thickness homogenous sheets for decorative pieces with impregnated color pigments, Ultraviolet (UV) stabilized for optimum weathering properties, with extra anti-static protection

Example for the panel fix with mild steel tubing



Mild Steel Tubing (1-1/2" OD – A Pipe)

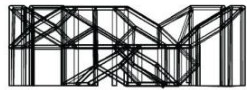
Shall be 1-1/2" outer diameter Light (A) tubing with 2.60mm nominal wall thickness, electro-galvanizing acts as a rust resistant sealer, zinc phosphate pre-treatment cleans and provides corrosion resistance, polyester powder coated to produce a tough protective exterior finish.

**PRESPECTIVE**

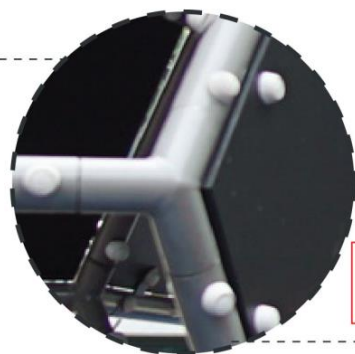
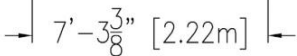
16 pieces of hexagon shaped panel



Multiple 'Y' shaped for the jointing from inside

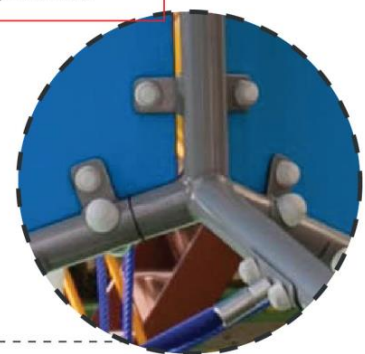


**FRONT**



'Y' shaped jointing used to joint the steel tube

**SIDE**



## XE GEO BENCH-001

**Equipment Size:**

1.78 x 2.69 x 0.6m (h)

**Maximum Capacity:**

8

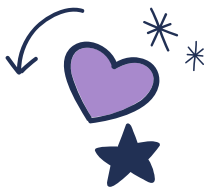
**Age Group:**

4+





About **Park Games Equipment**





“

For 25 years  
**Park Games Equipment**  
has always focused on making  
the **BEST**  
playground possible

”





# What differentiates PGE from the rest?



## A Brand You Can Trust

PGE has been around for 25 years and have been producing international standard products with long term track record exporting to countries such as Japan, Singapore, Thailand, UAE, Qatar, Oman, Philippines and many more prestigious projects in countries worldwide.



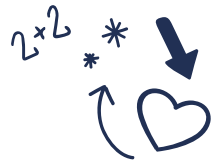
## International Standard Certified Products

All PGE products are designed to the highest safety, play value, and best quality equipment in compliance with international safety standards; EN 1176: TUV of Germany, ASTM of USA and Quality Management System of ISO9001:2008



## Tested, proven & still the preferred brand

PGE has products installed in the Middle East under harsh condition weather for more than 10 years and playground hit by tsunami in Japan with only a piece of plastic damaged, but they are standing strong still up till today. PGE products is built for a peace of mind.



# PGE Products



## Bigger, Better

First and foremost **our products are bigger than our competitors.** It is hard to tell from CAD drawings, here are some specifications on size for our VTX range:

- Deck / Platforms: width 37" (940mm)
- Pillars: diameter 4-1/2" (114mm)
- Spring: outer diameter 6-1/2" height 16"
- Slide: internal width of 17"

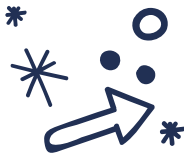
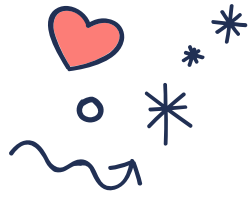
Compare this with our competitors and you will see that PGE products cost more because you get more. All this adds up to give our products its unique "fuller" and "bigger" feel. Needless to say, our equipment would also accommodate more children.



## Stronger, Sturdier

Most of our competitors purchase their rotomolded components from a few generic suppliers which is why they all have a similar feel, look and weight.

**PGE manufactures our own components** hence it is unique and we are in control of the material used, making PGE's rotomolded components the thickest which installers say they are twice the weight and highest UV protection in Malaysia and probably internationally as well.



# Some of our projects

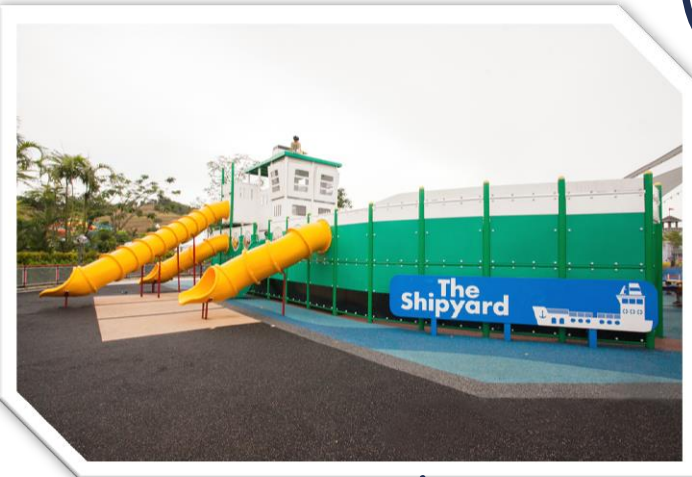
We create nurturing play environment, comprising of high play value and quality equipment in compliance with international safety standards.

We take absolute pride in our Research & Development to ensure all products are thoughtfully designed and created to enrich the lives of little children, teenagers and adults by promoting fun-filled healthy lifestyle, around the world.



## S2 Heights, Rimbun Harmoni

IJM Land Berhad



## Legoland Theme Park

IDR Assets Sdn Bhd



## East Lake Central Park

Tropicana Corporation  
Berhad



## Gamuda Gardens Central Park

Gamuda Land Sdn Bhd

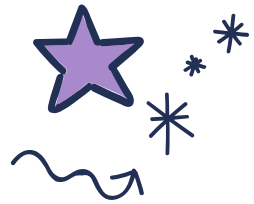


## Garden International School



## 28 Dutamas

BT Homestead  
Development  
Sdn Bhd



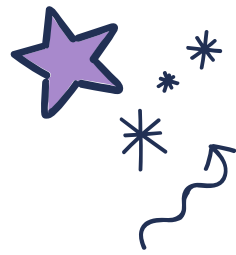
# Safety Standards and Warranty

PARK GAMES® provides warranties on all materials and workmanship for one year, excluding vandalism.

In addition, PARK GAMES® offers:


- Lifetime limited warranty on all Aluminium Post
- Lifetime limited warranty on all Stainless Steel Hardware
- 5 years limited warranty on Direct Bolting System
- 5 years limited warranty on all Galvanized & Powder Coated Components
- 5 years limited warranty on all Rotationally-Molded Components
- 5 years limited warranty on Plastisol Coated Components
- 3 years limited warranty on Ropes, Moving Parts, Swing Seats and Springs

This warranty does not include any cosmetic issue. To the extent permitted by law, these warranties are applied in lieu of any other implied or expressed warranties or representations by any person, including warranty of merchantability or fitness.



# Product Liability Assurance

Park Games Equipment (PGE) has the extensive Product Liability Assurance coverage in the amount of RM500,000; another initiative by PGE to further protect customers and end users

  
**PRODUCT LIABILITY ASSURANCE**

Park Games Equipment (M) Sdn Bhd has the extensive Product Liability Assurance coverage in the amount of MYR 500,000.00. Another initiative by PGE to further protect our users and clients.

**POLICY NUMBER**  
D1&LPRL8709157KL

RHB Insurance Berhad  
(38000-U)

**LIMIT OF LIABILITY**  
MYR 500,000.00 any one claim or for all claims made under the policy

**EXCESS**  
MYR 5,000.00 on each and every claim

For further enquiries, contact our Customer Service Representative at:  
Tel: +60 (3) 74910278 or Email: info@parkgames.com.my

0812

# Certification & Product Assurance



Malaysia Good Design Mark



EN1176:TUV of Germany



SIRIM



ISO





# Our Global Partners





# Thanks



## Contact Us

305, Block B, Phileo Damansara 2  
15, Jalan 16/11, Off Jalan Damansara  
Selangor Darul Ehsan, Malaysia

Suite No.156, 7/225  
Lonsdale Street Dandenong  
Victoria 317, Australia

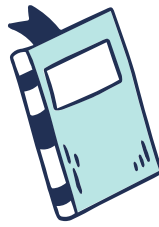
Office: +(60)3 7491 0278  
Whatsapp: +(60)12 743 1848

[www.parkgames.com.my](http://www.parkgames.com.my)

# MORE about our product



**B**



**3**



**2**



# MORE about our product



**A**



$2 \times 2$



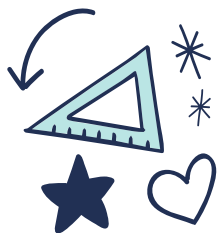
**1**





## Material Specification

Let's take a deeper dive into how exactly we make our products



## Uprights / Pillars

As these pillars are either in the ground or come into direct contact with the ground, it is usually where rust starts. Which is why PGE makes pillars out of Aluminium because it will never rust.

We guarantee it, that's why we even provide a lifetime warranty on this!

<b>Material</b>	Aluminium
<b>Outer Diameter (OD)</b>	88mm (KPC, KPY) and 100mm (KFN, VTX)
<b>Wall Thickness</b>	4mm
<b>Exterior Coating</b>	UV Stabilized Powder Coating
<b>Footing Depth (for in-ground)</b>	600mm
* For high loading applications, steel is used where specification is as listed in Metal column in the next page.	



## Metal Components

Paint flaking and peeling off? Rusting patches are a dangerous safety hazard! This is because galvanized surfaces are poor receiver of powder coating hence, it comes off easily. But not with PGE products, PGE do an in-house Zinc-Phosphate pre-treatment after galvanizing which is ideal for powder coat adhesion.

Also all PGE coatings are safe even if kids accidentally swallow some of it. In a recent survey on playgrounds in Penang Island, Malaysia, it was found that most playgrounds tested contains dangerous levels of lead.

PGE products are tested by the German TUV Standards, BN EN 71-3:1995 to be safe from dangerous toxic levels and no lead was detected.



# Metal Components

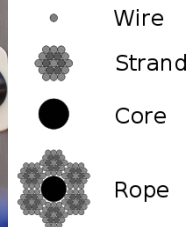
<b>Material</b>	Mild Steel
<b>Protective Coating</b>	Galvanized
<b>Pre-treatment Coating</b>	Zinc-Phosphate
<b>Exterior Coating</b>	UV Stabilized Powder Coating
<b>Powder Coating Thickness</b>	70microns



# Rope Components

Nylon or Poly-Amide ropes are the best ropes for playground as they are most resistant to resistant and abrasion. PGE fittings are usually solid aluminium or stainless steel which are hydraulic clamped to ensure the ropes do not fray or snap, and fittings do not open up.

<b>Material</b>	Nylon rope over galvanized steel wire
<b>Diameter</b>	16 & 18mm
<b>Built</b>	6 strand & fibre core
<b>Core</b>	Nylon fibre
<b>Fitting / Connectors</b>	Solid aluminium, stainless steel or nylon
<b>Origin</b>	Imported from Europe



## Hardware and Fasteners

PGE usually use M10 (10mm diameter bolts) which is bigger than what most competitors use.

<b>Material</b>	Stainless steel, galvanized steel (where necessary)
<b>Cover</b>	Polypropylene anti-vandalism safety caps



# Decks

PGE plastisol coated decks provide a rubberised, non-slip and very durable surface. Much more durable than powder coating and also an excellent impact absorber, making it safer for kids. This coating is also safe if accidentally swallowed.

<b>Material</b>	Plastisol coated 2mm thick steel plate
<b>Standard Square Deck Size</b>	660mm (26") for KPC, 914mm ( 3-1/2") for KPY, 939mm (37") for KFN
<b>Built</b>	Reinforced with cross metal frame and side walls, with pre-fabricated holes
<b>Protective Coating</b>	Galvanized
<b>Pre-treatment Coating</b>	Zinc-phosphate
<b>Exterior Coating</b>	UV Stabilized Powder Coating
<b>Powder Coating Thickness</b>	70microns



# Roto-Moulded Components (including panels)

PGE's roto-moulded components are said and proven to be heavier than our competitors and as a result, it is much more durable and have a much sturdier structure. Also, the colours on the roto-moulded components do not fade even in harsh weather conditions.

<b>Material</b>	Roto-moulded medium high density Polyethylene, UV Stabilized homogenous colour
<b>Wall Thickness</b>	6mm
<b>Tunnel / Tube Slide</b>	Diameter of 760mm (30") or 635mm (25") flat starting section of 380mm (15") and landing area of 500mm (20")
<b>Open Slide</b>	Bedway 430mm (17") width, slide wall 170mm (7"), flat starting section 380mm (15") and landing area of 500mm (20")



## Roof

PGE roofs are made with durable UV stabilized 10-15mm thick High Density Polyethylene sheets, at that thickness the sheets will not warp or deform. These roof panels are made to sustain durability even in the toughest climate and condition.

<b>Material</b>	High Density Polyethylene Sheets
<b>Thickness</b>	10mm
<b>Mounting</b>	Galvanised steel frame (please refer to Metal Component)
<b>Open Slide</b>	Bedway 430mm (17") width, slide wall 170mm (7"), flat starting section 380mm (15") and landing area of 500mm (20")



# Springs

Spring used on PGE products are made for off-road trucks. It is made by automotive experts hence they are larger in diameter, heat treated to be flexible yet durable giving it a nice, light and bouncy feel that even younger children will have loads of fun playing.

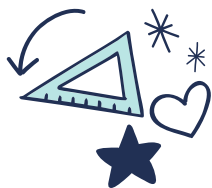
<b>Material</b>	Steel
<b>Measurement</b>	165mm outer diameter coil, 400mm length with nominal 20mm thick steel
<b>Treatment</b>	Heat-treated





## Quality

Comparison of a good and poor quality  
playground equipment



## Rope Equipment

Ropes are flexible, steel is solid - hence they alone provide a new and exciting dimension to play. Good quality ropes from Europe are not cheap so we at PGE keep the cost low by buying them in rolls and fabricating the structure ourselves. PGE uses nylon ropes with steel core imported from Europe, PGE use hydraulic pressed solid aluminium or nylon connection.

Our competitor's design look like ropes but are usually just steel bars. Steel is cheap, ropes are not - it's good to know what you are getting.



# Springs

Springs are a classic. They provide a rocking motion and are ridiculously fun. Good quality springs should have a large diameter and rod size but made from soft heat-treated steel rods. This will make sure they are both soft and strong which translates to fun and durable.

PGE uses APM springs with a 6-1/2" outer diameter, 16" height and 5/8" thick rod.

Our competitors use...well...see for yourself. Even if they are using springs they are usually small and stiff, they are no fun to play with.

